

# MANISH BEARING ENTERPRISES

[www.manishbearing.com](http://www.manishbearing.com)



# COMPANY PROFILE

Dear Sir/Ma'am

Greetings from Manish Bearing Enterprises! Our commitments towards conviction and attention towards aspirations, has let our drive to serve in the industrial sector. Since our inception in 1977 in Delhi, to becoming the SKF Authorized Industrial Distributor in 1989, we have been recognized for our reliability & industrial knowhow. With meticulous planning, industrial knowledge, strict quality control & prime service, Manish Bearing Enterprises has consistently been awarded as North India's No. 1 Distributor from 2000-2015. We have outlets in 3 major locations, namely- Mumbai, Gurgaon, & Kanpur. Our team of hardworking colleagues & a loyal client base of more than 1500 customers, covers all industrial segments - Steel, Automotive, Cement, Power, Paper, Engineering and more. To serve our customers with a variety of products and services under one roof, we have associated with some major companies in bearings and other industrial products which are one of the best in their respective fields, such as:

- **NSK-RHP Bearings:** NSK is Japan's No. 1 Bearing manufacturer and considered one of the best in the world.
- **ZKL Bearings:** ZKL is a well known brand since last 90 years. ZKL is the biggest manufacturer of large-scale spherical-roller, special and split bearings in Central Europe.
- **FYH Bearings:** FYH is a leading Japanese manufacturer of Pillow/Unit Bearings.
- **ALFA LAVAL:** Alfa Laval is a Sweden based, 134 years old, World's No.1 manufacturer of high-quality Plate Type Heat Exchangers, Centrifuge Separators and Decanters.
- **Diamond Chain:** For more than 125 years, Diamond Chain has manufactured chain that lasts longer and performs better.
- **CEC:** Capital Engineering Corporation are engaged in manufacturing, supplying, exporting and service providing of a wide range of Machine Spindle

Genuine products combined with our excellent and professional service, ensures that we always offer our clients good value for money. We will continue to satisfy our customers beyond expectation through expertise, reliability and outstanding overall service. We look forward to get associated with your esteemed organization and serve you with the best quality products.



# MOTION & CONTROL™

# NSK

## SUPER PRECISION & INDUSTRIAL BEARINGS

NSK is Japan's No.1 and the oldest bearing manufacturer and one of the best in the world. It has wide range of industrial bearings used in every segment of the industry like Steel, Paper, Power, Automotive, Textile etc. NSK is World No.1 in Ball & Precision Bearing used in Industrial Motors, Pumps, Gearboxes, High-Speed Machine Tools (CNCs, BMCs & VMCs).



### Super Precision Bearings

NSK offers a wide line up of precision angular contact ball bearings where customers to choose the optimum specification of bearing according to the needs of their application.

NSK precision angular contact ball bearings provide the perfect solution for applications requiring high run out accuracy of rotating machine parts, such as the machine tool main spindles, or the application of faster rotating speeds.

### Ball And Roller Bearings

NSK manufacture a full range of deep groove and miniature ball bearings. These bearings are the most common type and are used in a wide variety of applications.

NSK manufacture full range of roller bearings like Spherical Roller, Cylindrical Roller, Taper Roller, Thrust Roller Bearings. These bearings are the most common type and are used in a wide variety of applications.



### Precision Machine Component

**Ball Screws** - NSK Ball Screws are developed through cutting-edge tribology (Friction Control Technology) and are the largest manufacturers in the world with its outstanding production and quality control techniques.

**Linear Guides** - NSK linear guides incorporates production technologies that ensure high precision and outstanding quality. We offer an extensive product line up high - load capability and excellent dust resistance performance to meet the need of a variety of industries such as machine tools, medical equipment, and semi conductor manufacturing equipment.



# RHP

## Super Precision Bearings

The RHP range of Super Precision bearings includes a full range of single row angular contact bearings and deep groove ball bearings that are designed to meet the following requirements:

- Extreme Accuracy
- Quiet And Smooth Running
- High Rotational Speed
- Minimum Friction And Heat Generation

To provide for a wide variety of applications, a choice of standard preload loads are available. In addition, these bearings are universally faced so that pairs can be mounted back-to-back or face-to-face without affecting the preload value. The bearings are also matched on bores and outside diameters to improve load sharing.





## COMPLETE RANGE OF INDUSTRIAL BEARINGS

ZKL is a well known brand since last 90 years. ZKL is the biggest manufacturer of large-scale spherical-roller, special and split bearings in Central Europe. It has a complete range of quality bearings, used in all types of industries like Steel, Paper, OEMs etc.

### Product Range :



**Deep Groove Ball Bearings**



**Self Aligning Ball Bearings**



**Thrust Ball and Roller Bearings**



**Spherical Roller Bearings**



**Spherical Roller Thrust Bearings**



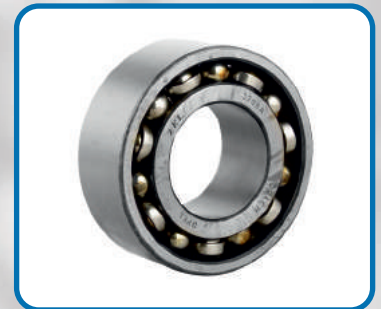
**Cylindrical Roller Bearings**



**Taper Roller Bearings**








**Single Row Angular Contact Bearings**



**Double Row Angular Contact Bearings**

### ZKL Bearings Are Used In Wide Field Of Individual Industries:

-  Metallurgy Industries: Steel Mills, Rolling Mills, Seamless Tube Mills
-  Power Industries: Hot Air Fans, Booster Power Stations, Wind Power, Ball Mills, Turbine.
-  Heavy Engineering Industries: Mining, Cement, Stone Crushers, Conveyor & Material Handling.
-  Process Industries: Sugar, Paper, Chemicals, Rubber etc.
-  OEM's: Gear Box, Pump & Motors, Paper Machine, Steel Mills etc.





## UNIT/MOUNTED BEARINGS

FYH is the largest manufacturer of mounted ball bearing units in Japan. FYH fabricates high quality metallic and ceramic bearings under extremely strict guidelines and tolerances.



### STANDARD PILLOW BLOCK UNITS LIGHT, MEDIUM & HEAVY DUTY SERIES

- Pillow Blocks
- Take Up Units
- Flange Units
- Hanger Bearings Units
- Cartridge Units
- Framed Take - up Units

### STAINLESS STEEL SERIES

- Stainless Steel Housing and Inserts
- Recommended for Food and Chemical Industries



### CLEAN SERIES

- Inner ring and set screw with anti-corrosive plating
- Waterproof rubber coated cover
- Lightweight and compact design by anti-corrosive housing
- Superior sealing effect, pre-lubricated bearings

### FYH SPHERICAL ROLLER BEARING UNITS

More than sixty years of experience and innovation in the field of mounted ball bearing units has led to production of mounted spherical roller units that cater to wide range of applications and industries.



### THE CORROSION RESISTANT SERIES

The corrosion resistant series is available in a wide array of sizes and styles, and units may be customized with a number of different specialized options to accommodate virtually any application. Federal compliance can assured with FYH Bearing Units.

# SKF

## BEARINGS & MAINTENANCE PRODUCTS

SKF is the world leading manufacturer of bearings. Providing solutions in various applications of industries for better maintenance practices, in terms of condition monitoring, lubrication systems, mounting and dismounting practices, sealing solutions and much more.



**BALL & ROLLER BEARINGS**



**FITTING TOOL**



**INDUCTION HEATER**



**PULLER**

## MAINTENANCE PRODUCTS



**SKF GREASES & LUBRICANTS**



**TEMP. GUN**



**TACHOMETER**



**VIBRATION PEN**

## CONDITION MONITORING

# NACHI

JAPAN

## ROLLER AND PRECISION BEARINGS.

Nachi-Fujikoshi, high speed and precision in bearings that are durable and compact. Benefiting from our continually advancing technology, these parts are at work in automobiles, industrial machinery, and equipment in various other sectors to contribute better reliability.



**PRECISION BALL & ROLLER BEARINGS**

## PRODUCTS RANGE

- Deep Groove Ball Bearings
- Angular Contact Ball Bearings
- Cylindrical Roller Bearings
- Spherical Roller Bearings
- Thrust Ball Bearings
- Precision Machine Tool Bearings

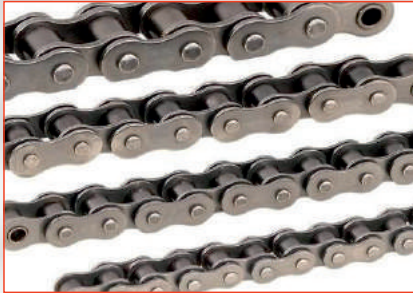




## ROLLER & CONVEYOR CHAINS

Diamond Chain manufactures roller chain from the highest-quality materials, carefully designing, fabricating, and assembling each component so that the finished product exceeds both industry standards and customer expectations. A quality chain in a long-lasting chain, and with more than a century of experience, Diamond Chain knows how to build products that last.

### Standard Roller Chains



Standard roller chain, widely recognized as being the best performing chain for the most demanding applications. Diamond ISO/British Standard delivers best-in-class wear performance against the competition. Standard chains are being manufactured for all applications in ISO/American Standard.

### Conveyor Chains

Produced to ANSI B29.4 standards, our double-pitch conveyor roller chains are used in conveyor applications when loads are low and speeds are moderate. They are most often found working on conveyors of all shapes and sizes and can be supplied with one or more of our many attachments to carry or convey products.



### Corrosion Resistant Chains

Diamond Chain produces a full assortment of corrosion resistant roller chain with special substrates or finishes for use in humid and corrosive manufacturing environments.

### Coupling Chain

Diamond Coupling Chain is designed for use with drive couplings to provide near-seamless power transmission. The chain's file-hard components have superior durability that allows our coupling chain to outlast standard carbon steel roller chain.



### Attachment Chains

Single and Double-pitch roller chains are available assembled, with either attachment link plates or extended pins. Diamond Chain can work with you to make sure you get the chain that best fits your application. Our made-to-order roller chains deliver better results and long-term value.



## MACHINE TOOL SPINDLES & SPINDLE REPAIR

Capital Engineering Corporation are engaged in manufacturing, supplying, exporting and service providing of a wide range of Machine Spindles. These products are designed and developed in CAPITAL ENGINEERING's state-of-the-art manufacturing unit. Due to our higher range of spindles, these products are extensively used in diverse industrial applications.



### Mfg. / Repair of High Precision Spindles :

- Belt Driven Internal & External Grinding Spindles
- High Frequency Internal Grinding Spindles
- Deep Bore Grinding Spindles
- Milling Spindles (VMC Spindles)
- CNC Turning Spindles

### Repair of Spindles Machines :

- Mazak
- Mori
- Seiki
- Deckel
- Makino
- Fischer

### Application In Various Industries :

- Automobile
- Machine Tools
- Medical
- Defence
- Railways
- Jewellery & Ornaments



# HIWIN®

## LINEAR GUIDEWAYS & BALLSCREWS

HIWIN is a Taiwanese company which manufactures high quality Linear Guideways & Ballscrews. Hiwin products are used in many industries including Automotive, Printing & Packaging, Medical and General Automation.



### Linear Guideways:

- **HG Series**- These guideways are designed with load capacity and rigidity higher than other similar products with circular-arc groove and structure optimization.
- **EG Series**- These guideways are a low profile, high load capacity, and high rigidity guideway blocks. It also features an equal load rating in all four directions and self-aligning capability to absorb installation-error, allowing for higher accuracies.
- **CG Series**- These guideways have moment load capacities up to 50% higher than standard HG Assemblies. These guideways greatly improve moment load capacities and promote smooth motion.



### Ballscrews:

- **Precision Ground Ballscrew**- Precision ground ballscrews provide high positioning accuracy and repeatability, smooth movement and long service life. These highly efficient ballscrews are a perfect solution for a variety of applications.
- **Rolled Ballscrew**- Rolled ballscrews provide smooth movement and low friction which can be supplied quickly from stock, at a lower production cost.
- **Super S Series**-The Super S series can absorb ball impact noise which greatly reduces the noise intensity and allows the ballscrew to sustain peak performance in rigorous environments.





## PLATE TYPE HEAT EXCHANGERS & SEPARATORS

Alfa Laval is a leading global supplier of products and solutions for heat transfer, separation and fluid handling through our key products – heat exchangers, separators, pumps and valves. We currently play a vital role in areas that are crucial for society, such as energy optimization, environmental protection and food production.



### Plate Type Heat Exchangers

ALFA LAVAL Gasketed Plate Heat Exchangers are optimizing heat transfer by large surfaces of corrugated plates drawing heat from one gas or liquid to the other. The high efficiency and an outstanding reliability in a compact design, offers an investment with the most attractive CTO over the product life time.

### Braze Type Heat Exchangers

Alfa Laval's comprehensive range of brazed plate technology offers a smart alternative to traditional heat exchangers. The application experience of Alfa Laval's heating and cooling experts, combined with our continuous innovation in design and manufacturing techniques, ensures you always have access to the most competitive solution available.



### Centrifugal Separators

The Alfa Laval MAB separator helps prevent breakdowns and reduce downtime on equipment that uses fuel or lubricating oils. This flexible separator is suitable for all marine installations and power stations. Use it as a purifier or clarifier, ensuring reliable equipment operation for longer.

### Decanters

Solid-liquid separation is a common manufacturing process and Alfa Laval has more than 60 years of experience in decanter centrifuge uses to meet this requirement in various industries. Together with our industry know-how and specialist process experience from all over the world, Alfa Laval can match your exact needs for each particular application and installation.



### Plates & Gaskets

Alfa Laval boost productivity and maximize uptime with quality genuine spare parts, with easy access to a broad range of long-lasting high-quality parts, you can lower your total cost of ownership and preserves the value of your equipment throughout its entire life cycle. Designed for durability, reliability and productivity, our parts deliver outstanding performance time and time again.

## V-BELT & TIMING BELTS

PIX is the leading manufacturer of V Belt & Timing Belt in India. Having production capacity of more than 60,000 V Belt per day. Pix having strong local as well as global presence, having subsidiary operation in Europe, Middle East & China.

### WRAPPED CONSTRUCTION BELTS



### RIBBED / POLY-V BELTS



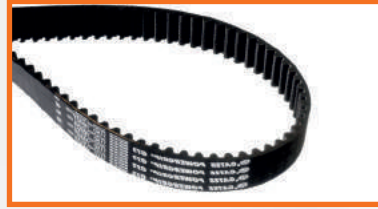
### RAW EDGE COGGED BELTS



### FIRE - RESISTANT, ANTI - STATIC BELTS



### TIMING / SYNCHRONOUS BELTS



### TOP COAT BELTS



### SERVICE EQUIPMENT & ACCESSORIES -



PIX-belt Length Measure



PIX Pulley Gauges



PIX Belt Profile Gauge



PIX Tension Tester

## KASTAŞ

## HYDRAULIC & PNEUMATIC SEALS

Kastas, Turkey base leading manufacturer of Hydraulic and Pneumatic sealing elements and custom made sealing solutions. Having wide range of Piston, Rod & Wiper Seals, Guide Rings etc..



**PISTON SEALS**



**ROD / U SEALS**



**WIPER SEALS**



## SHAFT OIL SEALS

SOG, Oil Seals is a Taiwan based company, manufacturing shaft oil seals in NBR and Viton compound used in various applications.



**NBR OIL SEAL**



**VITON OIL SEAL**



# CERTIFICATES

**MOTION & CONTROL™**  
**NSK**

**DISTRIBUTOR CERTIFICATE**

We have pleasure to confirm that **Manish Bearing Enterprises**  
**62, Shardhanand Marg, G.B.Road, Delhi - 110 006**  
is our Authorized Distributor and has the right to sell NSK & RHP products.  
This certificate is valid till **31<sup>st</sup> March 2022**.

*Yoshiyuki Matsumura*  
President and Managing Director

*Vinit Mangrulkar*  
Vice President - Industrial Business Unit

NSK Bearings India Private Limited

**ZKL GROUP**

The history is cornerstone of the present time  
as well as challenge to the future.

**CERTIFICATE**

This is to certify that  
**MANISH BEARING ENTERPRISES**  
62, Shardhanand Marg, (G.B.road), Delhi – 110006, India  
is an Authorised Dealer in the territory of India of  
„ZKL“ branded bearings and bearing accessories supplied by  
ZKL BEARINGS CZ, a.s., BRNO, CZECH REPUBLIC being a part of the ZKL GROUP.  
Validity of this certificate is until 31.12. 2021

Brno, 1.1.2021

For ZKL BEARINGS CZ, a.s.

**INDIA**

**DIAMOND**

**murugappa**

This is to certify that  
**M/s. MANISH BEARING ENTERPRISES**  
**DELHI**  
is **Authorised Dealer**  
for Industrial Chain Products of  
**TIDC INDIA**  
April 2021 - March 2023

**PRECIO**

*Mangesh Y*  
Mangesh Y  
Head-Sales - Industrial Chains  
Tube Investments of India Ltd.

*Sriram B*  
Sriram B  
Head-Sales & Marketing - Industrial Chains  
Tube Investments of India Ltd.

2020/TIID/AD/5055

**CEC** (AN ISO 9001:2015 COMPANY)

**CAPITAL ENGINEERING CORPN.**  
FAC.: A-7, Ambey Garden, Sarangpur Extension Industrial Area, Lhasa Pur,  
(Back Side IBP Petrol Pump) G. T. Karnal Road, Delhi-110042 (INDIA)

**CERTIFICATE OF AUTHORIZATION**

This is to certify that  
M/s Manish Bearing Enterprises Delhi & Gurugram is our  
Authorized Dealer to sell new and repairable spindles for  
All Machining applications for Northern India Region.

This Certificate is Valid till 31-May-2023

For Capital Engineering Corp.  
*J.L. Sudhir* (Managing Director & CEO)

MOBILE: 9810056849, 9971250888  
E-Mail: info@capitalengr.com

**FYH**

We in capacity as sole distributor in India for  
**FYH Bearing Units**  
and on behalf of our principal  
**FYH INC., JAPAN**  
appoint  
**MANISH BEARING ENTERPRISES**  
9, Satyam Plaza, Civil Lines, Jharsa Road, Gurgaon 122 001  
as our authorised dealer in India

*Jatin Shah*  
Knowell International Pvt. Ltd.  
Jatin Shah - Managing Director

This certificate is valid till 31st December 2022

www.fyh.co.jp

**PIX**  
Power Transmission Solutions  
*(Driving growth)*

**CERTIFICATE**  
(FY 2020-2021)

This is to certify that,  
*Manish Bearing Enterprises, Delhi*  
is our "Authorised Business Partner"  
for PIX Power Transmission Products  
(Industrial Products Division)

*Amarpal Sethi*  
Amarpal Sethi  
(Chairman & Managing Director)

**PIX TRANSMISSIONS LIMITED**

**Certificate**  
Authorized Distributor

It is herewith certified that

**ALFA**  
Authorized Distributor

M/s Manish Bearing Enterprises  
is entitled by Alfa Laval to use "Authorized Distributor" related to  
the sales of Alfa Laval  
Gasketed Plate Heat Exchanger & High Speed Separator  
and Service.

Pune  
1st Jan 2018

*Kumud Jhamb*  
Kumud Jhamb  
Vice President  
Energy Division

*Ramdas Salunke*  
Ramdas Salunke  
Vice President  
Service Division

This Certificate is valid till 31st December 2020.

## MANISH BEARING ENTERPRISES

**New Delhi:** 62, Shardhanand Marg (G.B. Road), Delhi -110006, Tel No. 011-23216555/23213554, Email: delhi@manishbearing.com  
**Gurgaon:** 9, Satyam Plaza, Civil Lines, Jharsa Road, Gurgaon-122001, Tel No. 0124-4081115/6, Email: gurgaon@manishbearing.com  
**Kanpur:** 78/53 A, 2<sup>nd</sup> Floor, Latouche Road, Kanpur-208001, Tel No. 9871123393, 9335399294, Email: kanpur@manishbearing.com  
**Mumbai:** 63/69, Nagdevi Cross Lane, 2nd Floor, Mumbai-400003, Tel No. 022-23436633, 8082031736, Email: mumbai@manishbearing.com